

Catalogue No: **PFS 1100-316**

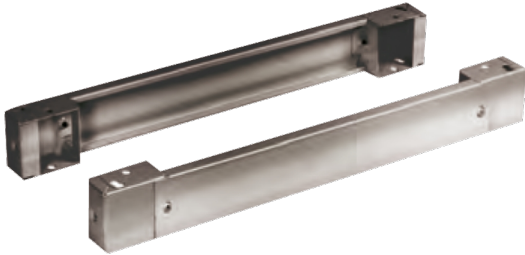
NVENT FS PLINTH 316 S/STEEL FRONT+BACK H100 x W1000mm

Enclosures and Climate Control > Standard Enclosures > Floor Standing Enclosures > Floor Standing Enclosures - Stainless Steel > Stainless Steel Accessories > Plinths - Front/rear Pieces, Stainless Steel



Plinth 316 S/Steel Front+Back H100 X W1000mm nVent HOFFMAN Floor Standing Enclosures

- The stainless steel plinth creates extra space below the enclosure which makes it easier to install cables
- The plinth allows enclosures to be fixed to the floor therefore no need for interior access



Representative Photo Only
(actual product may vary based on configuration selections)

SPECIFICATIONS

Material, Body / Housing	Stainless Steel, 316L material
Height	100 mm
Width	1000 mm
Width, Enclosure	1000 mm width
Height, Plinth	100 mm height

REFERENCES

IECEX Certificate	-
Supplier Declaration of Conformity:	-
Installation Guide:	-
User Manual:	-
Manufacturer Datasheet:	-
Manufacturer Catalogue & Product Selection:	-