

800H1HZ4C

Allen-Bradley 800H Enclosure ThermoPlas Poly 1 Hole 3 4 Inch
cduit Entry Grey for 30.5mm PB



Allen-Bradley

by ROCKWELL AUTOMATION

PUSHBUTTON AND PILOT LIGHTS



Component type	Control circuit devices combination in enclosure
Range	800T/H Pushbutton
Model	N/A
Product status	Existing

The Allen-Bradley 800T/H range of 30.5mm mount operators are designed and constructed to perform in the most demanding industrial environments. The range includes pushbuttons, selector switches, emergency stops, pilot lights. Available in both metal and plastic types with a modular design allowing for easy selection, configuration and assembly of components to form the operator control device.

CONSTRUCTION	Number of push buttons	1.0
	Number of key switches	1.0
	Number of selector switches	1.0
	Number of mushroom-shaped push-buttons	1.0
	Colour housing cover	Grey
	Material housing	Plastic
MECHANICAL	Vibration acceleration (Max)	10.0 m/s ²
	Vibration frequency, operational (Max)	2000.0 Hz
	Shock acceleration (Max)	100.0 g
DIMENSIONS	Height	110.0 mm
	Width	80.0 mm
	Depth	50.0 mm
ENVIRONMENT	Operating temperature	-40 - 55

800H1HZ4C

Allen-Bradley 800H Enclosure ThermoPlas Poly 1 Hole 3 4 Inch
conduit Entry Grey for 30.5mm PB

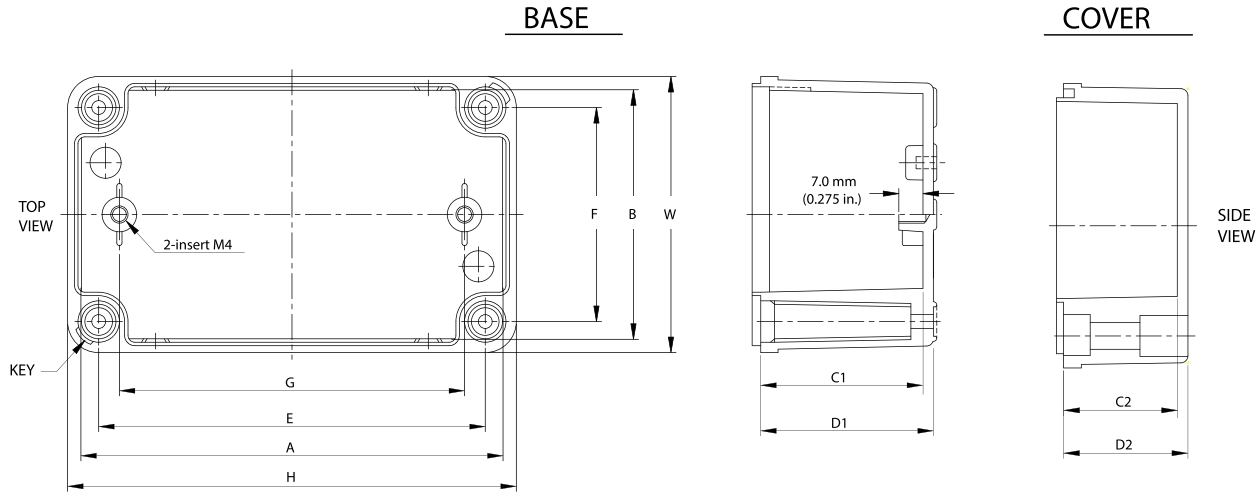


Allen-Bradley

by ROCKWELL AUTOMATION

PUSHBUTTON AND PILOT LIGHTS

DIMENSIONAL DIAGRAM



Thermoplastic Polyester Type 4/4X

Cat. No.	Overall Dimension			Inside Dimension				Enclosure Mounting Dimension		Mounting Plate Mounting Dim.	
	H	W	D1	D2	A	B	C1	C2	E		F
800H-1HZ4__	110 (4.33)	80 (3.15)	50 (1.97)	20 (0.79)	104 (4.09)	74 (2.91)	46.5 (1.83)	16.5 (0.65)	92 (3.62)	62 (2.44)	80 (3.15)
800H-2HZ4__	130 (5.12)	80 (3.15)	50 (1.97)	35 (1.38)	120 (4.72)	70 (2.76)	46.5 (1.83)	31.5 (1.24)	112 (4.41)	62 (2.44)	100 (3.94)
800H-3HZ4__	180 (7.09)	80 (3.15)	50 (1.97)	35 (1.38)	170 (6.69)	70 (2.76)	46.5 (1.83)	31.5 (1.24)	162 (6.38)	62 (2.44)	150 (5.91)
800H-4HZ4__	250 (9.84)	80 (3.15)	50 (1.97)	35 (1.38)	240 (9.45)	70 (2.76)	46.5 (1.83)	31.5 (1.24)	232 (9.13)	62 (2.44)	220 (8.66)