

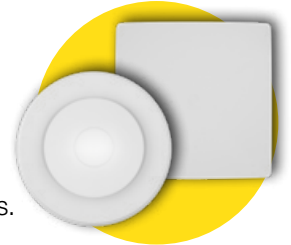
# RAPID RESPONSE

## GRILLE TO DUCT CONNECTOR

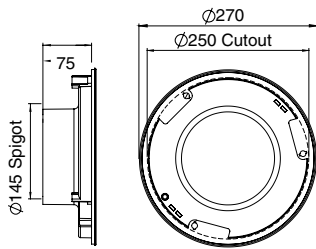


The easy to install Rapid Response grille to duct connector is designed to fit one of our stylish and modern 8" Rapid Response Grilles. The grille to duct connector is suited for ducted systems using an in-line, roof, or external wall mounted fan. These grilles are quick to remove, making them easy to clean.

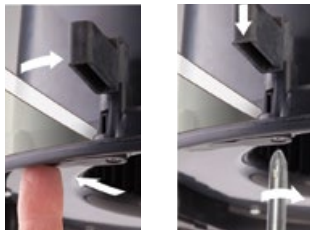
- High strength swing clips make installation easy.
- Can be retrofitted into a standard 8" (250mm) round cut out.
- Designed to fit our range of 8" Rapid Response Grilles.
- Suitable for 150mm ducting.



See page 32-33 for Rapid Response grille options.



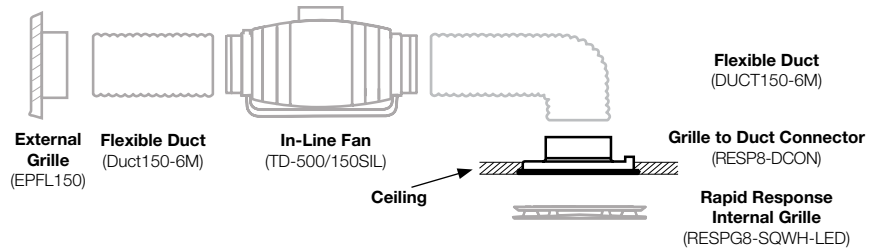
All dimensions in mm



Rotate swing clips to hold grille to duct connector in place.

Tighten screws so clips clamp onto ceiling board.

## TYPICAL IN-LINE INSTALLATION



External Grille (EPFL150)

Flexible Duct (Duct150-6M)

In-Line Fan (TD-500/150SIL)

Flexible Duct (DUCT150-6M)

Grille to Duct Connector (RESP8-DCON)

Rapid Response Internal Grille (RESPG8-SQWH-LED)

# RAPID RESPONSE

## CEILING GRILLE WITH CLIP-IN SPIGOT

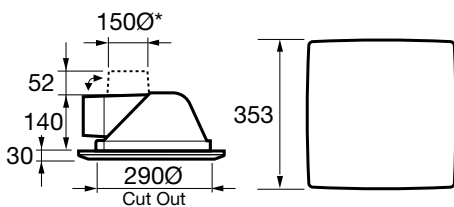


\* Oval spigot designed to fit 150mm duct. Spigot can be mounted horizontally or vertically.

The modern looking Response Ceiling Grille has been designed for ducted systems using an in-line fan and external grille. It features a clip-in spigot that can be positioned for horizontal or vertical duct connection.

- Can be retrofitted into a standard 10" round fan cut out.
- Unique 'push-out' ceiling clamps make installation easy.
- Clip-in spigot makes installation and duct connection easier.
- Grille can be easily rotated to align with the walls and removed for cleaning.

**Model No. RCG150SQWH**



All dimensions in mm